



ACCESS CONTROL SYSTEM

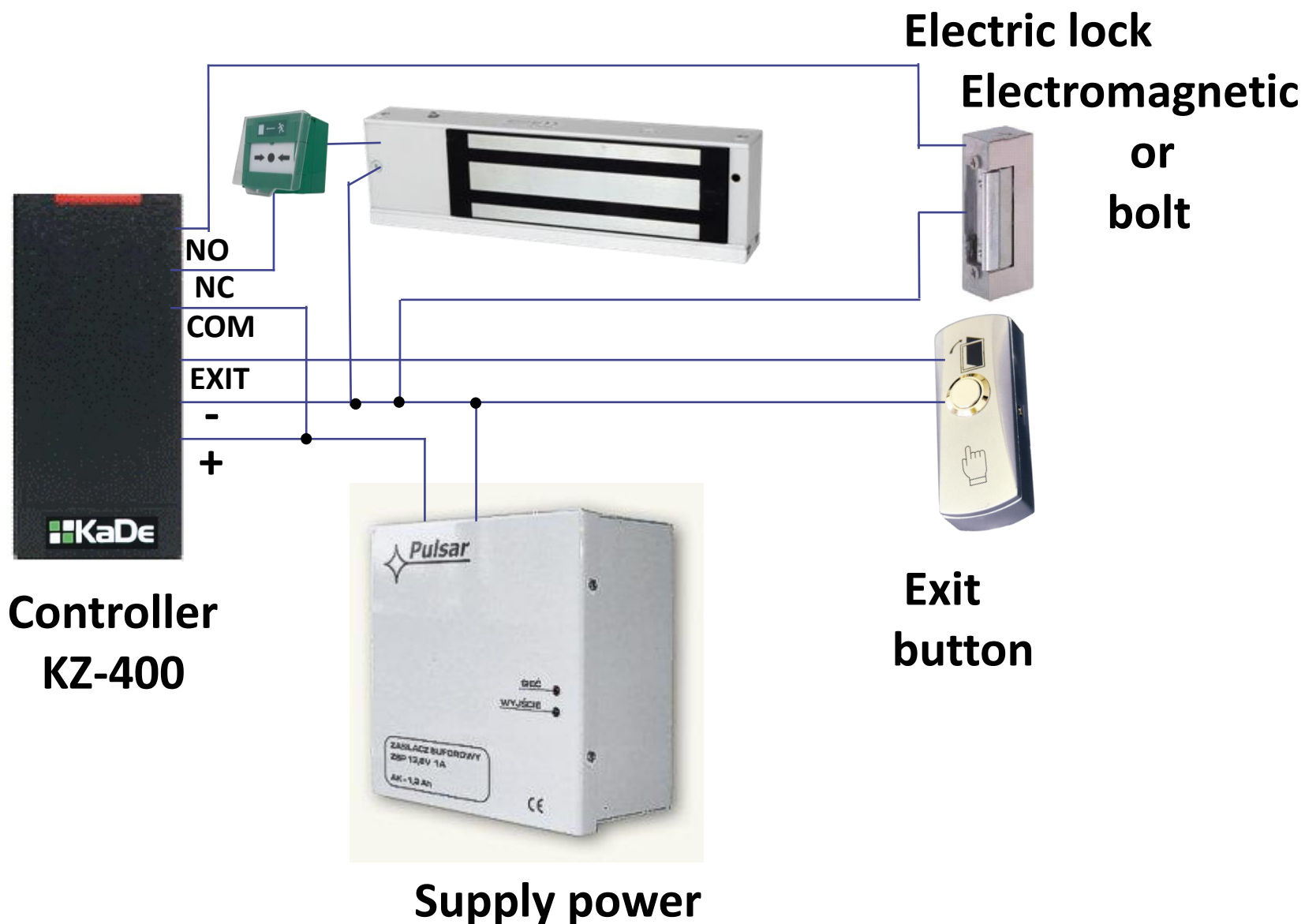
System versions

- **Standalone controllers series based on integrated models
KZ-400, 500, 600, 700, KZC-300,800, 900**
- **KaDe Lite system based on integrated controllers
KZ-1000**
- **KaDe Premium system based on standard controllers
KS-1012/1024-RS/IP**

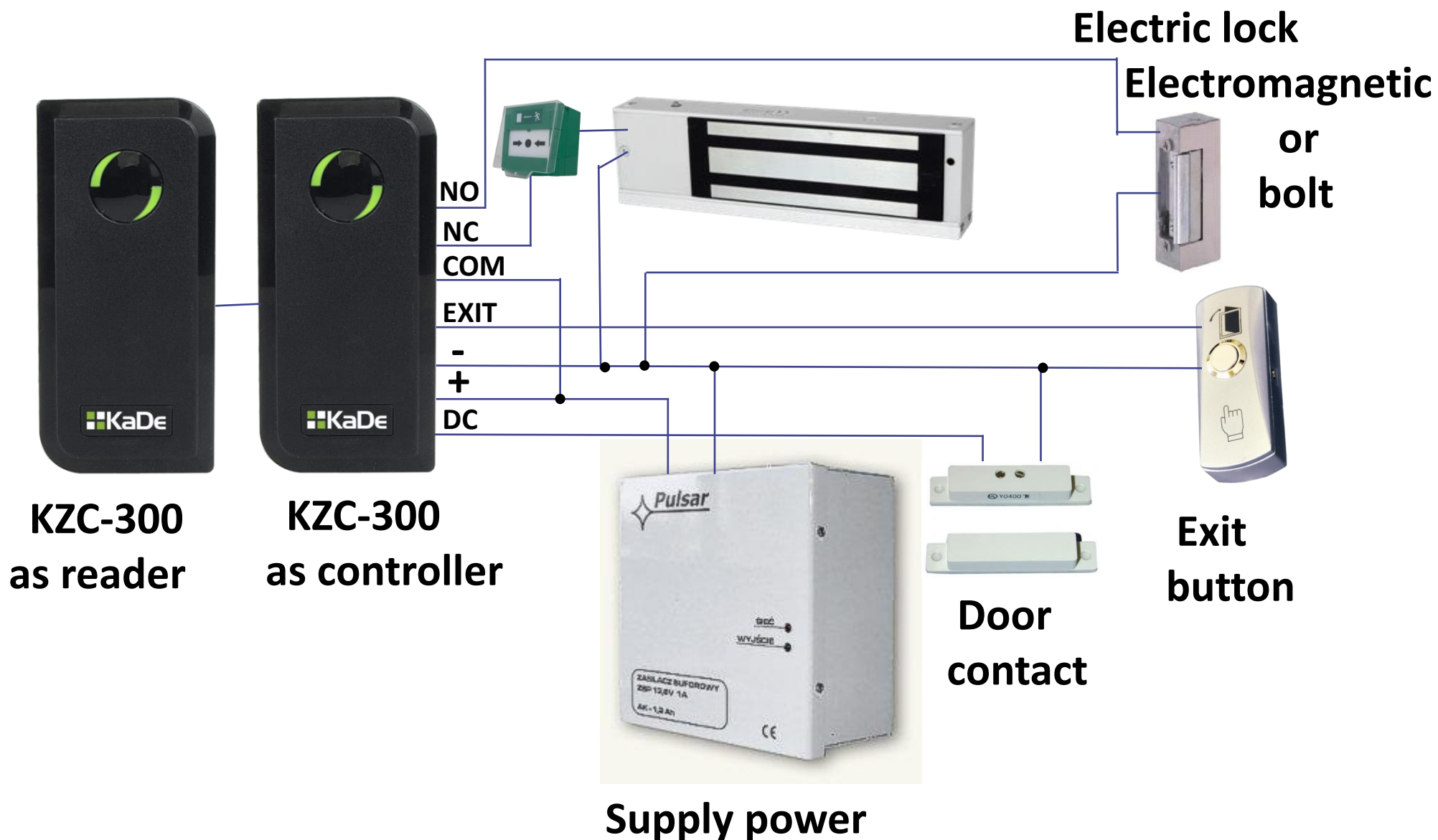
Standalone controllers series – KZ-400



Standalone controllers series – KZ-400



Standalone controllers series – KZ-400



Standalone controllers series – KZ-400



- ❖ Waterproof, confirm to IP66
- ❖ Read 125KHz EM & HID card
- ❖ One programmable relay operation
- ❖ Pulse mode, Latch mode
- ❖ Remote infrared programmer
- ❖ 2000 users
- ❖ Card block enrolment
- ❖ Tri-colour LED status display
- ❖ Built in light dependent resistor (LDR) for anti tamper
- ❖ Buzzer for audible or silent mode
- ❖ Low temperature resistance(-40°C)

Standalone controllers series – KZ-500



- ❖ Standalone controller with built in Card Reader
- ❖ Waterproof, confirm to IP68
- ❖ Use capacity: 10,000
- ❖ Card interface: HID&EM 125KHZ card/tag
- ❖ Remote control for programming
- ❖ With Manager cards for fast add and delete users
- ❖ Card block enrollment
- ❖ Can enroll maximum 10,000pcs cards at a time within 10 min.
- ❖ Wiegand 26 input/output
- ❖ Can be used as slave reader
- ❖ 2 pcs of KZ-500 can be interconnected
- ❖ Can be used as controller by connection Wiegand reader
- ❖ Anti-passback function
- ❖ Alarm signal output, Door open detection
- ❖ LED display
- ❖ Full of 10000 users, recognizing speed <15ms.

Standalone controllers series – KZ-600



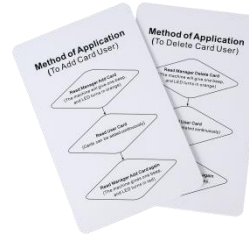
- ❖ Waterproof, conforms to IP68
- ❖ Strong zinc alloy electroplated anti-vandal case
- ❖ Two-relay operation
- ❖ Both of the 2 zone relays can be programmed for 3 modes: Card + PIN, Card, PIN
- ❖ 1200 users capacity:
 - Zone 1: up to 1100 Pin& Card holders
 - Zone 2: up to 100 Pin& Card holders
- ❖ Pin length: 4-8 digits; card type: 125KHz EM card
- ❖ Can be used as a stand alone keypad
- ❖ Pulse mode, Toggle mode
- ❖ Block enrollment, can enroll 1100 consecutive cards within 2 minutes
- ❖ Backlight keypad
- ❖ Adjustable Door Relay Output time, Alarm time, Door Open time
- ❖ Built in light dependent resistor (LDR) for anti tamper
- ❖ Built in buzzer
- ❖ Dual relay outputs for door opening, door status detecting, open door by button
- ❖ Red, Yellow and Green LEDS display the working status
- ❖ Support door bell connection (Zone 2)
- ❖ 12-24V DC/12-18V AC power input

Standalone controllers series – KZ-700



- ❖ Waterproof, conforms to IP68
- ❖ Strong zinc alloy electroplated anti-vandal case
- ❖ Dual-relay operation
- ❖ 2,100 users & 10 groups duress PIN/card
- ❖ Zone 1: up to 2,000 PIN & card holders
- ❖ Zone 2: up to 100 PIN & card holders
- ❖ Relay of both zones can be programmed for 3 modes: card, PIN, card + PIN
- ❖ Read both 125KHz EM & HID card
- ❖ PIN length: 4-8 digits
- ❖ Pulse mode, Toggle mode
- ❖ Wiegand 26-37 input & output
- ❖ Can be worked as reader or controller

Standalone controllers series – KZ-700



- ❖ Dual-relay output for door opening, door status detecting, open door by button
- ❖ Card block enrollment
- ❖ With manager cards for adding or deleting card user easily
- ❖ Very low power consumption (25mA)
- ❖ Backlight keypad
- ❖ Light and sound of keypad can be set
- ❖ Support door bell connection (Zone 2)
- ❖ Built in light dependent resistor (LDR) for anti tamper
- ❖ Built in buzzer
- ❖ Red, yellow, green and blue LED display the working status
- ❖ 12-24V DC /12-18V AC

Standalone controllers series – KZC-800/900



- ❖ 2 000 users with card and PIN
- ❖ 3 identification modes: card, PIN, card + PIN
- ❖ Read both 125KHz EM & HID card, PIN length: 4-8 digits
- ❖ Pulse mode, Toggle mode of lock relay
- ❖ Wiegand 26-37 input & output
- ❖ Can be worked as controller or reader
- ❖ Relay output for door opening, inputs for door status and exit button
- ❖ Manager cards for adding or deleting card user easily
- ❖ Backlight keypad
- ❖ Support door bell connection
- ❖ Built in light dependent resistor (LDR) for anti tamper
- ❖ Red, yellow and green LED display the working status
- ❖ Very low power consumption (35mA)
- ❖ 12-24V DC

Standalone controllers series – KZC-300



- ❖ 2 000 users with card and PIN
- ❖ 3 identification modes: card, PIN, card + PIN (PIN using pilot)
- ❖ Read both 125KHz EM & HID card, PIN length: 4-8 digits
- ❖ Pulse mode, Toggle mode of lock relay
- ❖ Wiegand 26-37 input & output
- ❖ Can be worked as controller or reader
- ❖ Relay output for door opening, inputs for door status and exit button
- ❖ Manager cards for adding or deleting card user easily
- ❖ Built in light dependent resistor (LDR) for anti tamper
- ❖ Red, yellow and green LED display the working status
- ❖ Very low power consumption (35mA), 12-24V DC

KaDe Lite & Premium version

- **System structure based on integrated controllers
KZ-1000 (KaDe Lite)**
- **System structure based on standard controllers
KS-1012/1024-RS/IP (KaDe Premium)**
- **Internal communication based on RS485 network or
IP protocol**
- **Multi-site system through LAN/WAN**
- **One workstation for system operator**

System Features

- **Electronic graphics with animated icon system components**
- **On-line monitoring for events and alarms**
- **User photo display after card usage**
- **Integration with CCTV - video compression card or DVR (4, 8 or 16 cameras)**
- **Saving the snapshot photo to the event/alarm archive**

System Features

- **Access after operator's confirmation**
- **Access after „first opening card"**
- **Multiple card access (1 to 4)**
- **Door opening according to the schedule after card reading**
- **Local anti-passback**
- **Query reports on access events, alarms, time & attendance saved as Excel files**

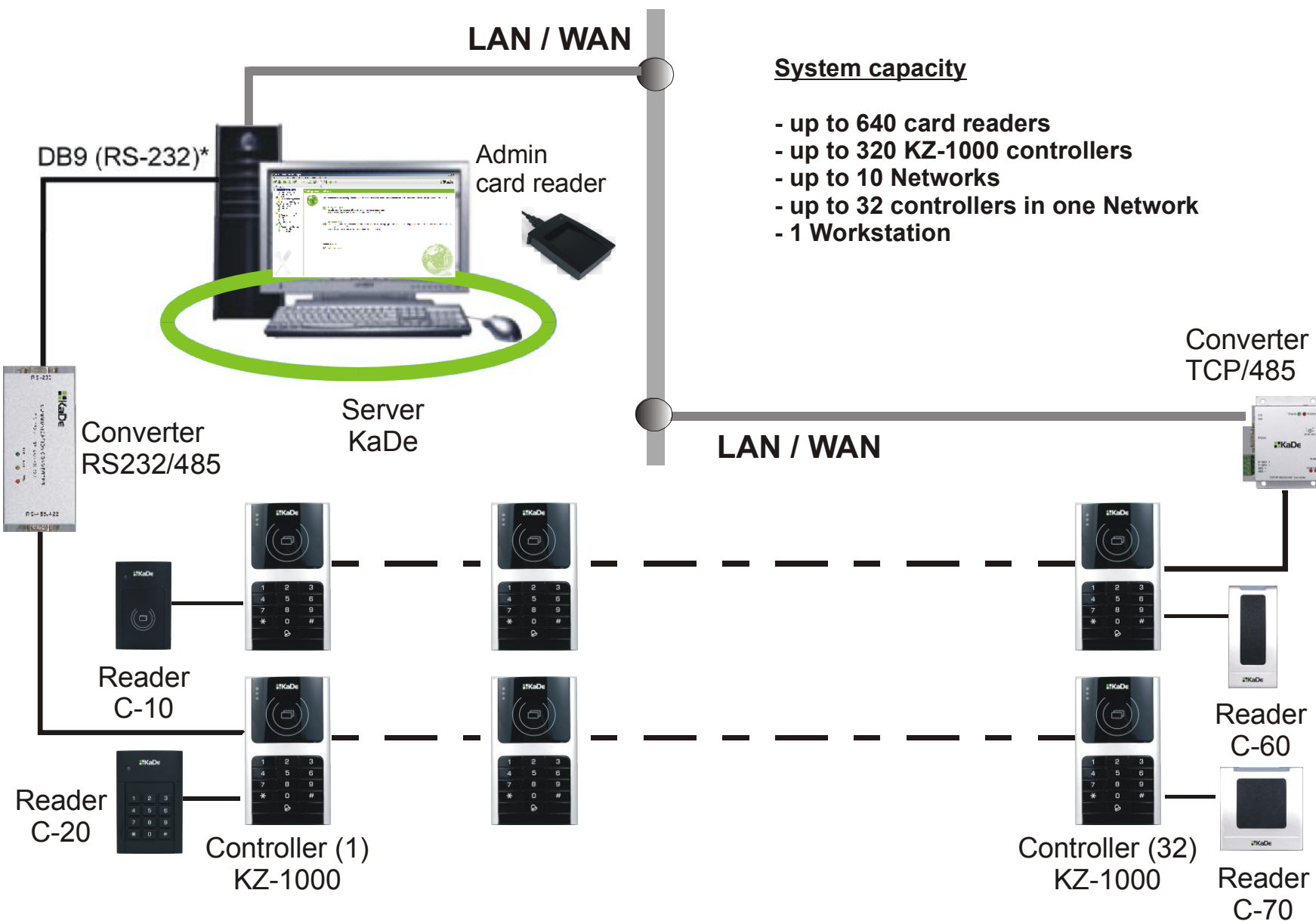


KaDe Lite

- Simple version -



KaDe Lite - System Architecture



KaDe Lite - System Components

- **Management software: KaDe Lite**
- **Integrated controllers: KZ-1000**
- **Proximity card readers (UNIQUE type)**
- **Administrator card reader**
- **Communication converters (RS, USB, TCP)**
- **Proximity cards - UNIQUE type (EM) 125 kHz**

KaDe Lite - Management Software

- **Quick and easy installation**
- **User friendly and intuitive Graphical User Interface**
- **English and Polish menu (other languages will be added)**
- **Electronic graphics with icons**
- **Integration with CCTV**
- **Filtered reports in Excel format**

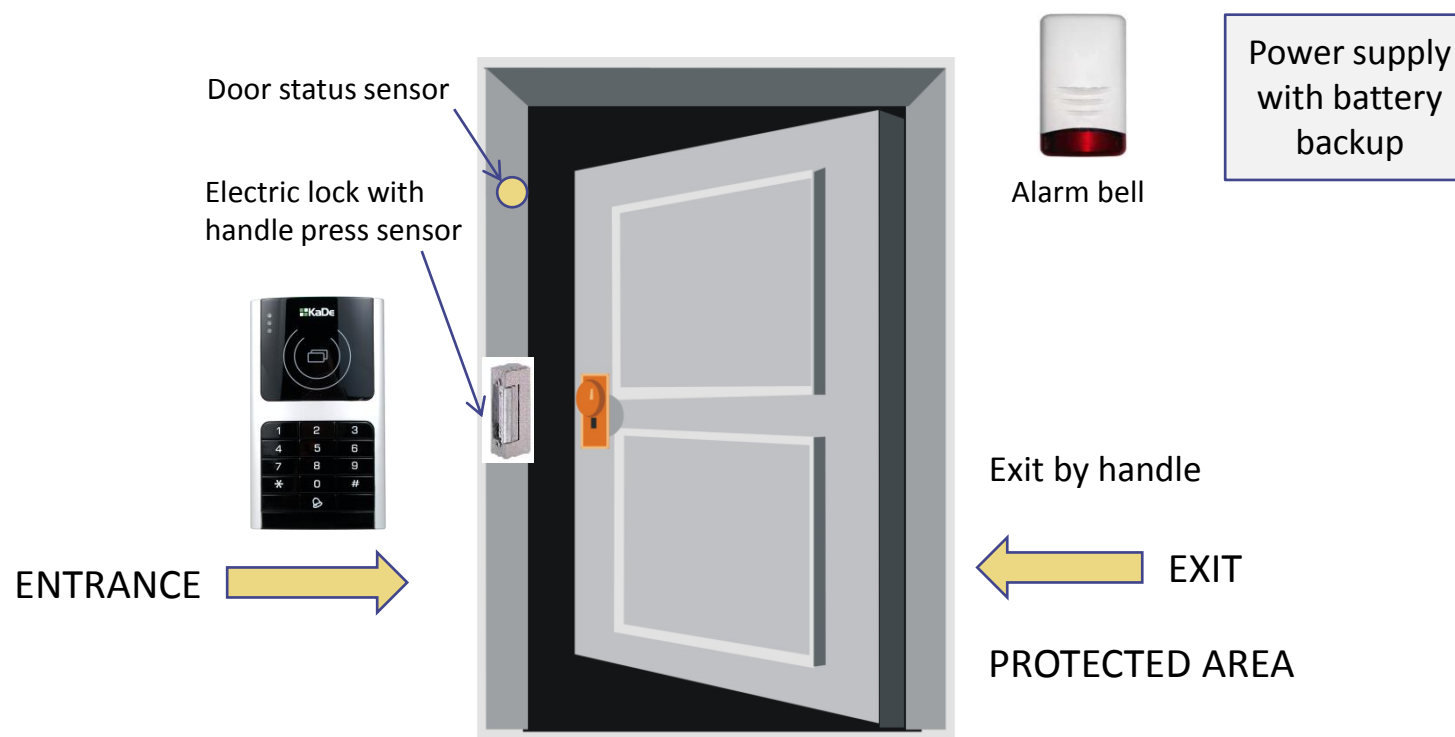
Integrated Controller: KZ-1000



- **Controller module**
- **Card reader with keypad**
- **LED and Buzzer**
- **Communication ports: RS232 and RS485**
- **Exit reader port**
- **Lock control and Alarm Relays**
- **Tamper**
- **Stand-alone and Network mode**

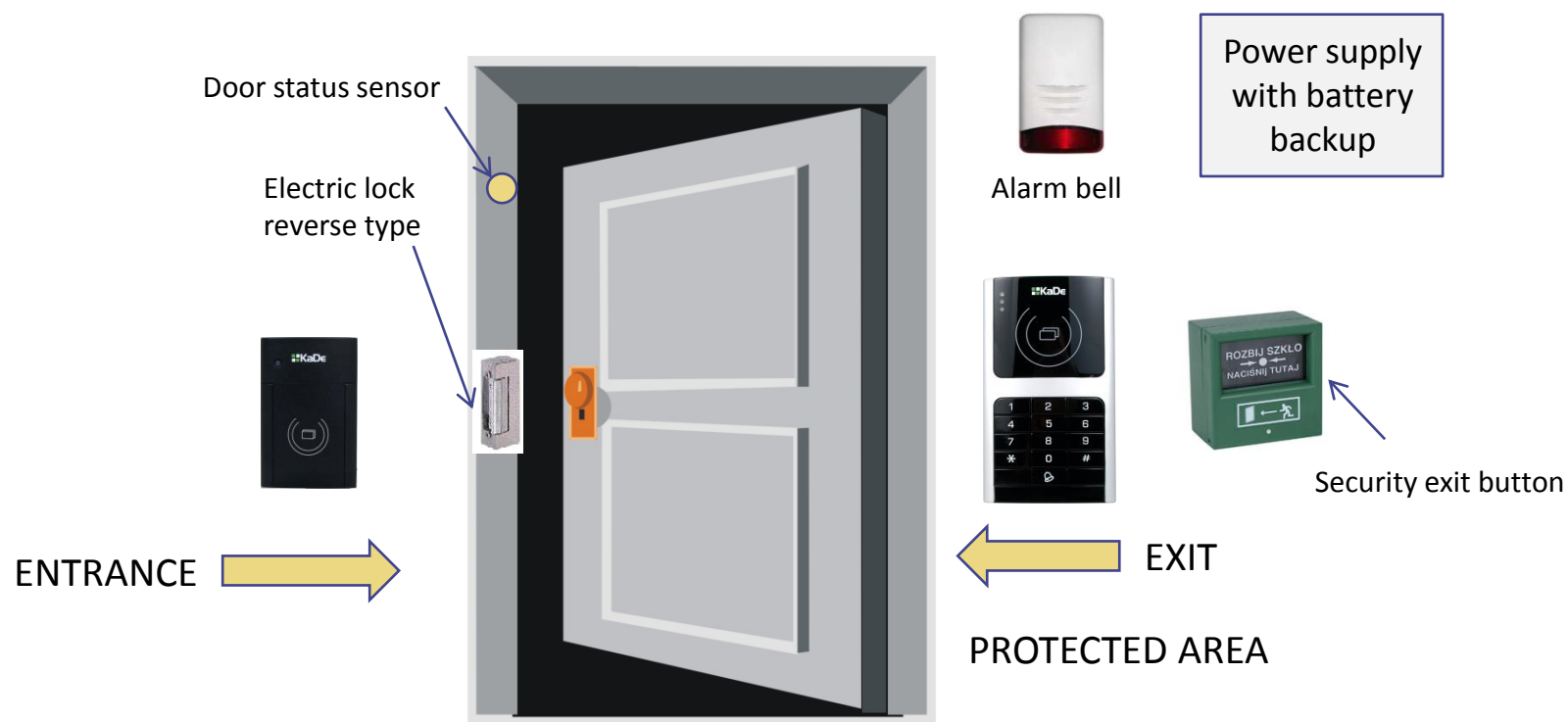
KaDe Lite - System Components

One way control



KaDe Lite - System Components

Two way control



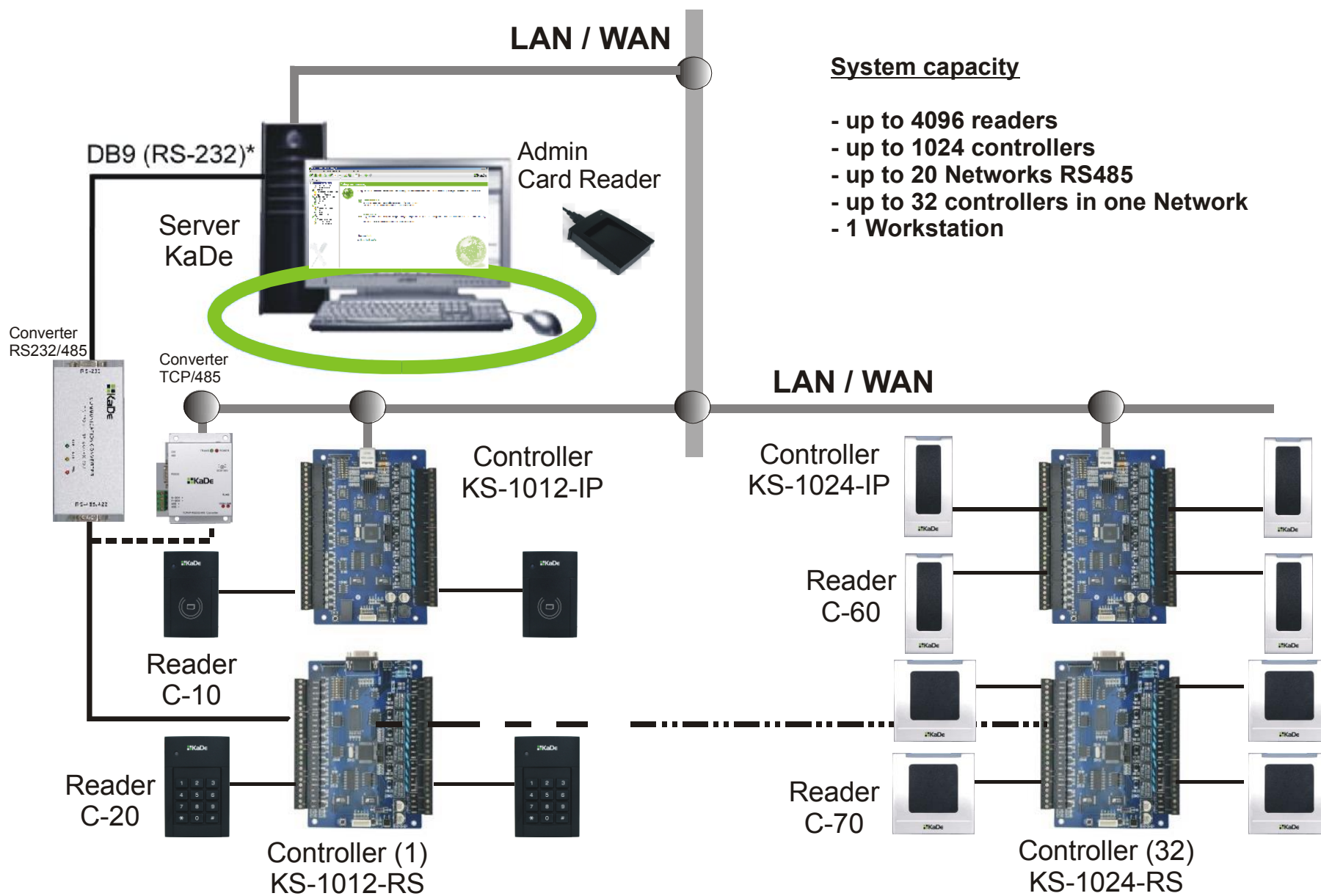


KaDe Premium

- Advanced version -



KaDe Premium - System Architecture



KaDe Premium - System Components

- **Management software: KaDe Premium**
- **Standard controllers: KS-1012/1024-RS/IP**
- **Readers with Wiegand output of up to 40 bits (Unique (EM), HID Prox, Mifare)**
- **Administrator card reader**
- **Communication converters (RS, USB, TCP)**
- **Proximity cards or biometric identification**

KaDe Premium - Management Software

- **Quick and easy installation**
- **User friendly and intuitive Graphical User Interface**
- **English and Polish menu (other languages will be added)**
- **Electronic graphics with icons**
- **Integration with CCTV**
- **Filtered reports in Excel format**

KaDe Premium - Management Software

KaDe Premium - Access Control Management System

Platform View Setup Monitor Reports Language System Help

Setup Real-time Monitor Reports

1 FLOOR | Monitor Mode | Fit Window(100,00%) | Size:2962x2104

NET-WORLD COMPANY

1 FLOOR

Event List

No.	Event Type	Card Number	Employee	Time	Controller	Door	Reader	Snapshot
4	Legal Card	6008775	JANE SMITH	2011-10-07 12:48:57	MAIN ENTRANCE	1	EXIT	
3	Legal Card	6008775	JANE SMITH	2011-10-07 12:48:44	MAIN ENTRANCE	1	ENTRANCE	
2	Legal Card	6008775	JANE SMITH	2011-10-07 12:48:38	MAIN ENTRANCE	1	EXIT	
1	Legal Card	6008775	JANE SMITH	2011-10-07 12:47:38	MAIN ENTRANCE	1	ENTRANCE	

☐ Event List ☐ Alarm List

Video Monitoring

Snapshot Preview

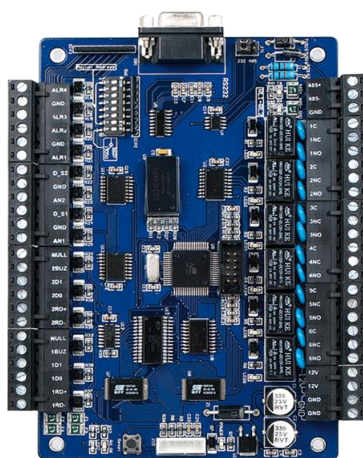
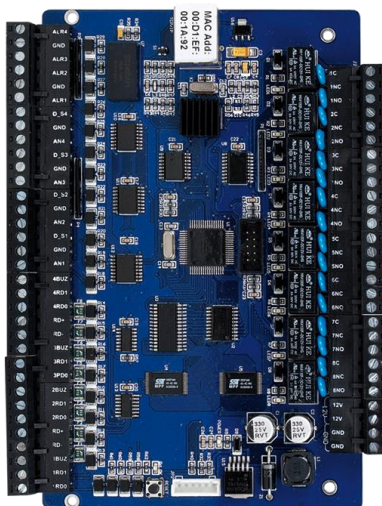
Task Report

[12:47:34] : Monitor started.
[12:47:34] : Starting monitor, please wait...

CAP | Current User: Administrator

Standard controllers:

KS-1012-RS, KS-1024-RS, KS-1012-IP, KS-1024-IP



- 4 doors - one way, 2 doors - two ways (KS-1024)
- 2 doors - one way, 1 door - two ways (KS-1012)
- 4/2 ports for readers with Wiegand outputs (26-40 bits)
- 8/4 inputs - door contacts and exit button
- 4 inputs - general use
- 4/2 relay outputs for electric lock control
- 4 /2 relay outputs - general use (+ 4 out on module)
- Communication ports - TCP or RS232/RS485
- 20 000 Card Memory
- 50 000 Event Buffer, 20 000 Alarm Buffer

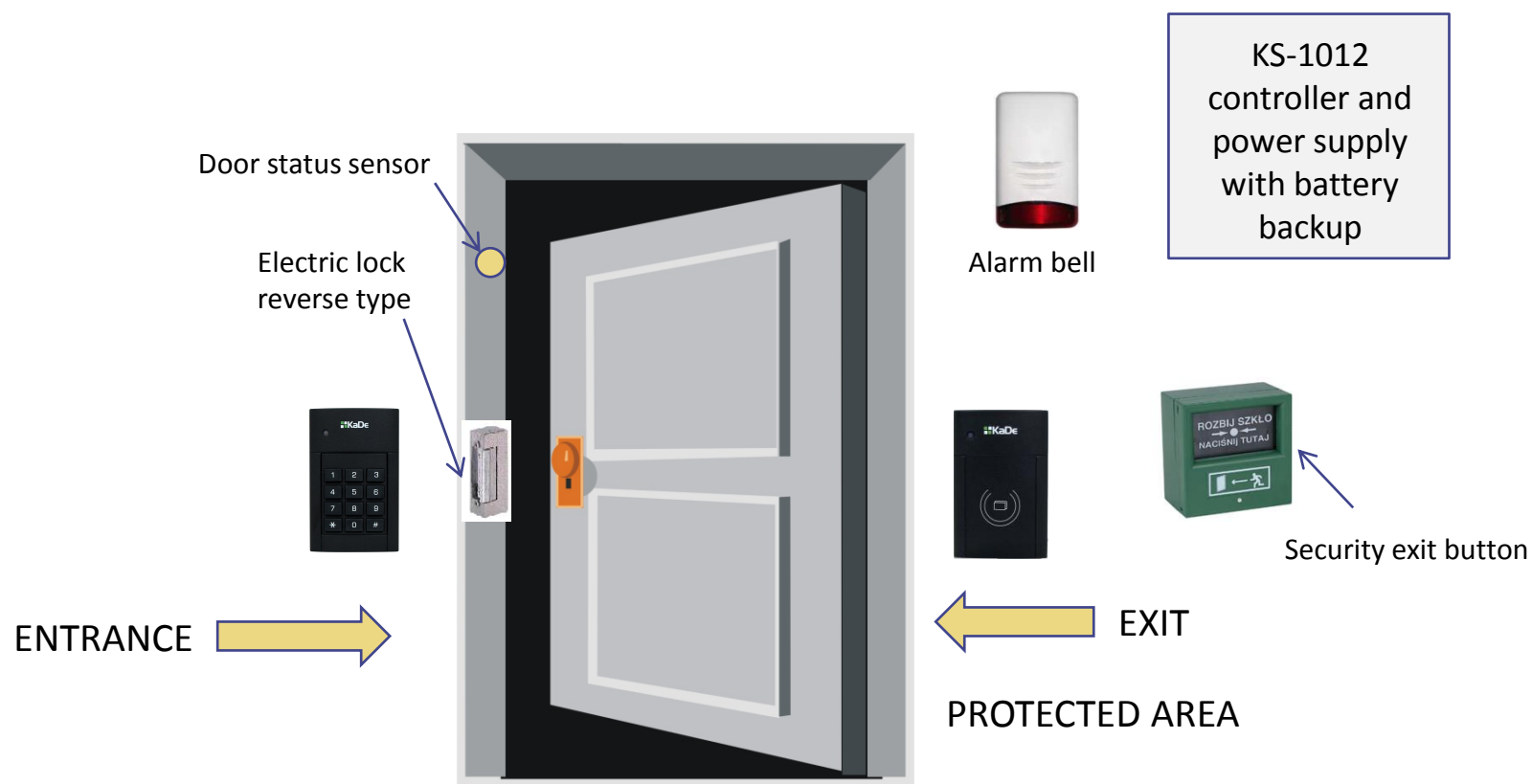
Power supply for standard controllers



APS-AAT-2 APS-AAT-3

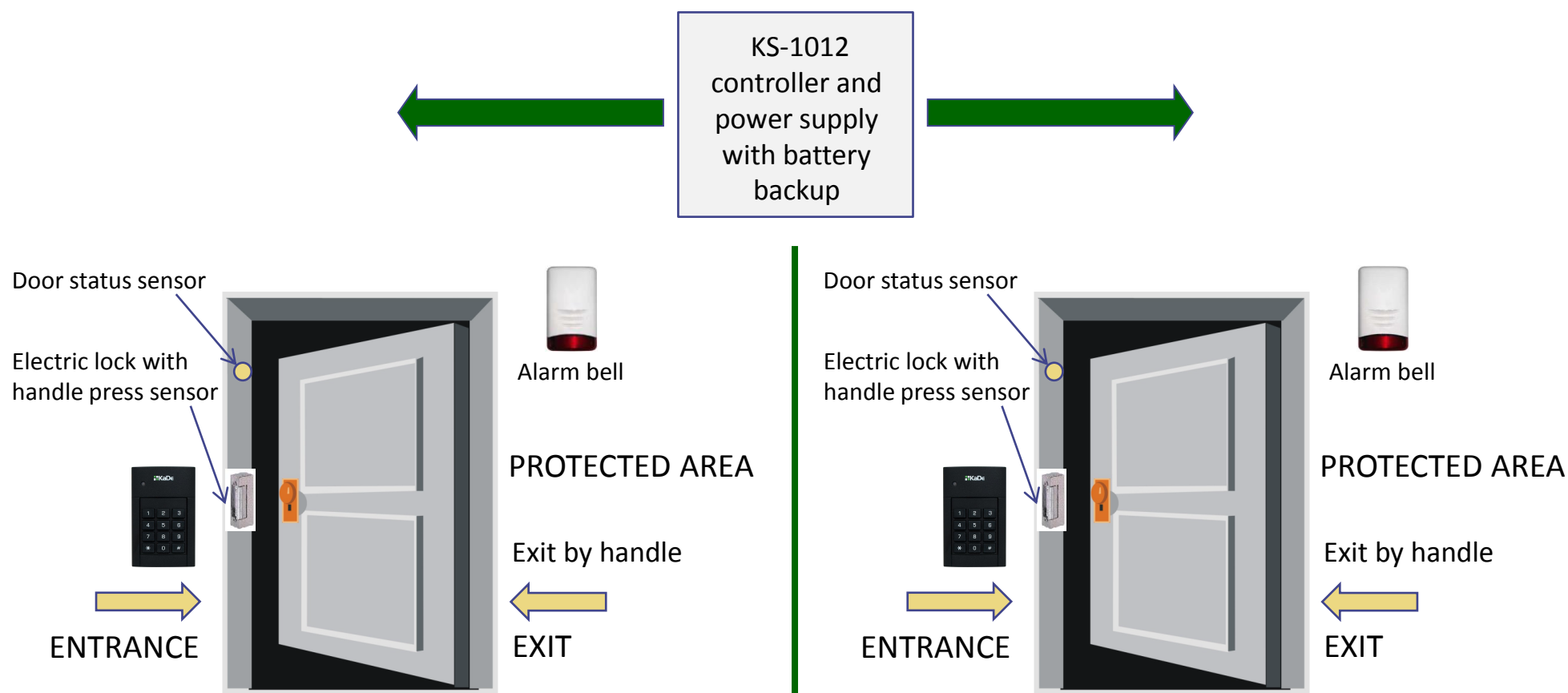
KaDe Premium - System Components

Two way control - one door - KS-1012



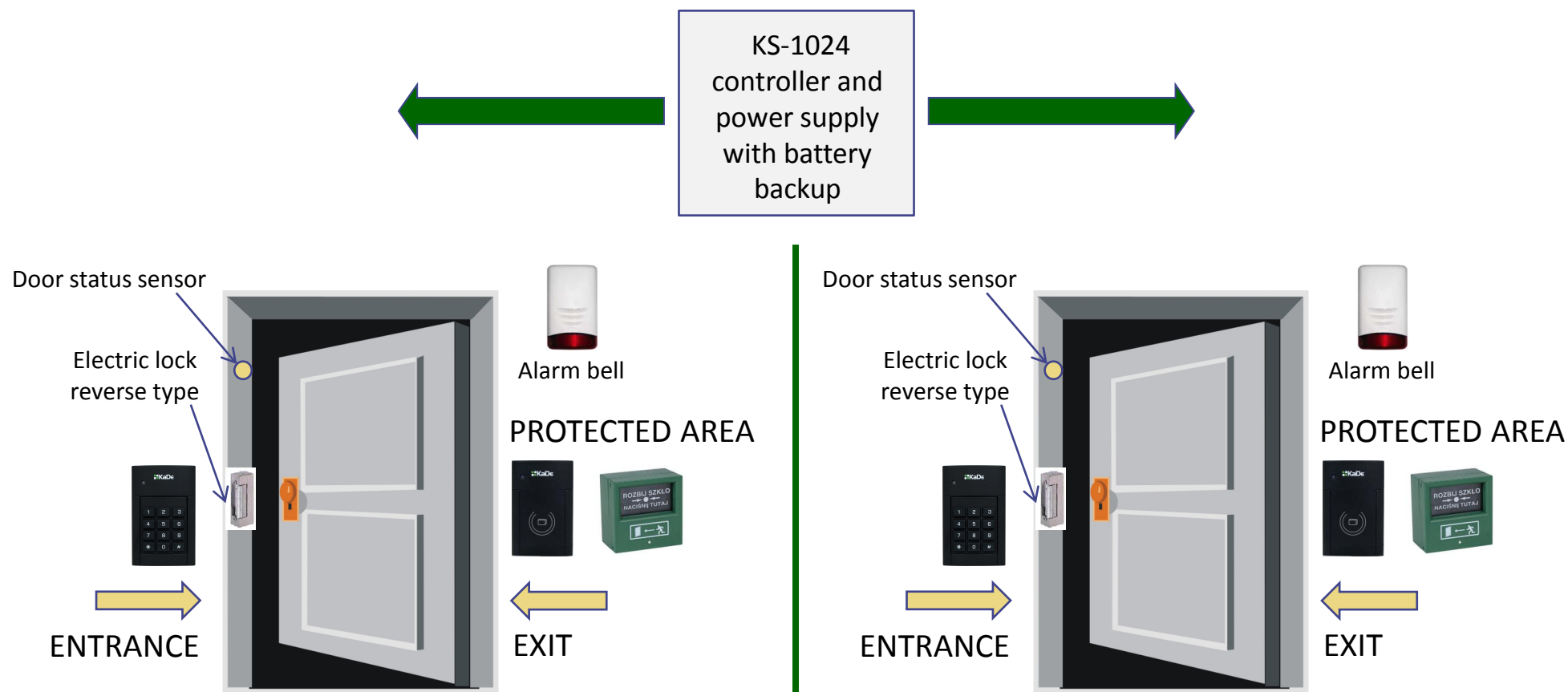
KaDe Premium - System Components

One way control - two doors - KS-1012



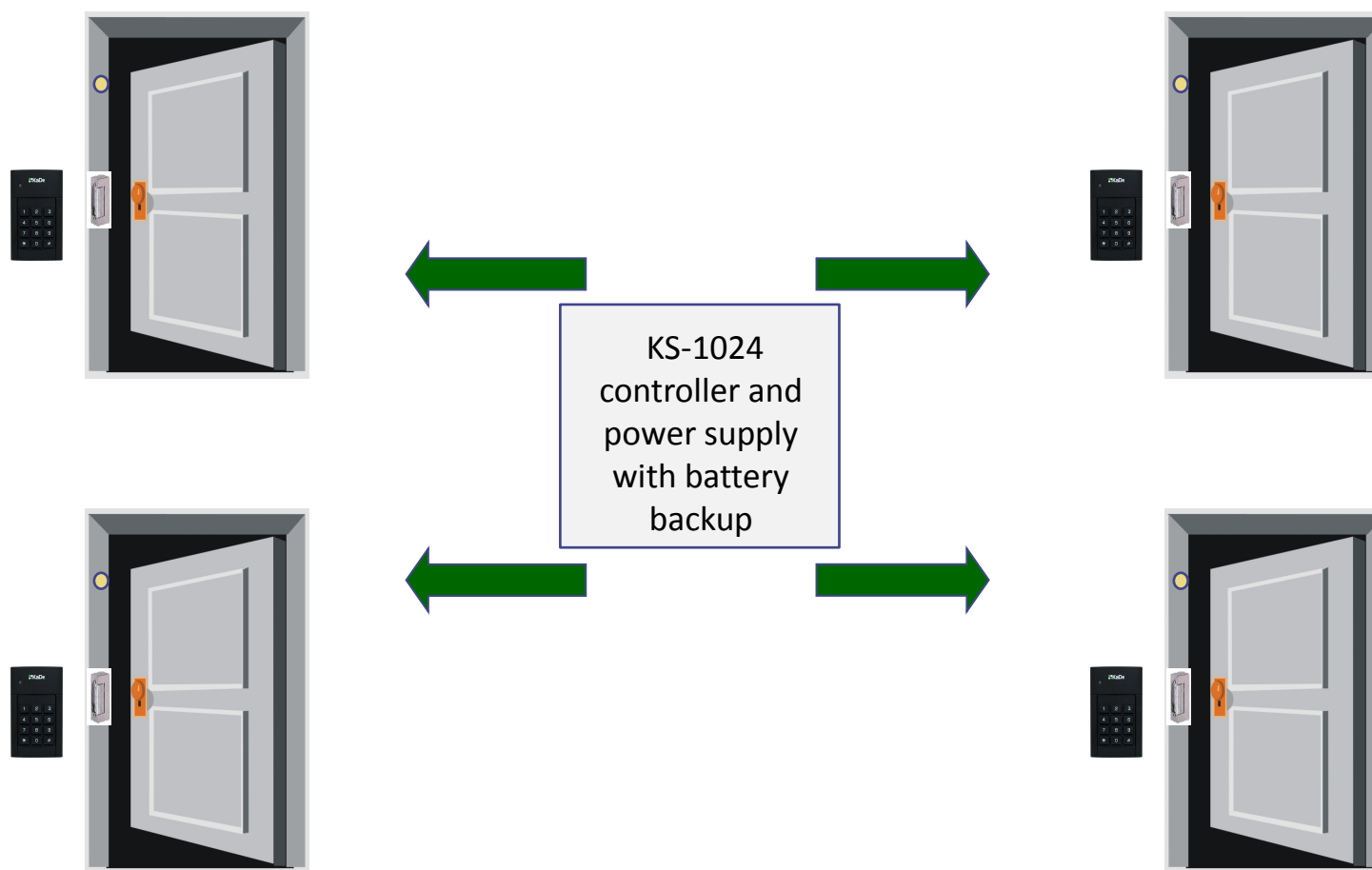
KaDe Premium - System Components

Two way control - two doors - KS-1024



KaDe Premium - System Components

One way control - four doors - KS-1024



Accessories for Access Control Systems

- Proximity card readers
- Administrator USB readers
- Proximity cards
- Transmission converters
- Electromagnetic locks
- Exit buttons
- Door closers

Proximity Card Readers:

C-10, C-20 (UNIQUE), C-11, C-21 (MIFARE)



- Reading range - 10 cm
- Power supply - 12 V
- Current consumption <150 mA
- LED and Buzzer
- Output format: 26 bit Wiegand (C-10,C-20)
- Output format: 34 bit Wiegand (C-11,C-21)
- Indoor and outdoor installation

Proximity Card Readers: C-60, C-70



- Reading range - 10 cm
- Power supply - 12 V
- Current consumption <150 mA
- LED and Buzzer
- Output format: 26 bit Wiegand UNIQUE
- Indoor and outdoor installation

Proximity Card Readers: C-30-U/H

UNIQUE & HID Prox



- Reading range - 10 cm
- Power supply - 12 V
- Current consumption <30 mA
- LED and Buzzer
- Output format: 26/37 bit Wiegand
- Card format: Unique (EM) & HID Prox (125 kHz)
- Indoor and outdoor installation

Admin Card Readers:

C-ADM-U (UNIQUE), C-ADM-M (MIFARE)



- **UNIQUE card format (24 bits) reading**
- **MIFARE card format (32 bits) reading**
- **Quick addition of card numbers to KaDe data base**
- **PC connection through USB port**
- **Power supply from USB port**

Proximity Cards:

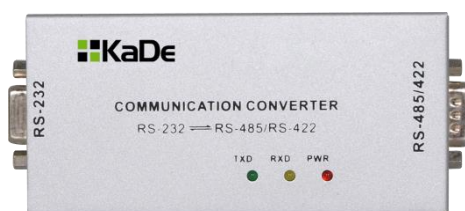
AST-U (UNIQUE), AST-M (MIFARE)



- Operating frequency: 125 kHz UNIQUE
- Operating frequency: 13.56 MHz MIFARE
- Different case: Clamschell, ISO, Tag
- Passive technology - supply from reader field
- No battery - no limit using time

Converters:

RS232/RS485, USB/RS485, TCP/RS485



- Signal conversion from RS485 to RS232, USB and TCP
- TX, RX and PWR LED's
- Optic isolation in transition line
- Surge protection
- Power supply - 12 V

Electromagnetic Locks:

AST-LOCK 1200/600/300



- For surface mount applications
- 'L' and 'Z' brackets available for inward opening doors
- Compact case size and clean aesthetics
- 500/250/136 kg magnetic holding force
- Power supply - 12/24 VDC
- Monitoring status output (1200/600 model)
- CE marked

Exit Buttons: AST-EXIT-M, AST-EBG-R2Z



- **Narrow style push button switch**
- **Illuminated switch with colour lens**
- **Switching rate - 5 A 250 VAC
- 6 A 24 VDC**



- **Suitable for emergency exit and escape doors**
- **Push plate to stop connected circuit
(2xNO/NC/COM)**

What will be new in KaDe in next months?

- **KaDe Net – network version of KaDe software:**
 - **Server/Client version**
 - **secured by watchdog USB key**
 - **new design**
 - **possibility to connect more than one DVR (Novus B series)**
 - **map hierarchy structure**
 - **camera icons on the map with small video window**

What will be new in KaDe in next months?

- **KaDe KS-1012/24-U – new universal controllers:**
 - IP and RS485 ports on board – two models only
 - new firmware with new features:
 - door status monitoring- door forced, door held
 - inputs monitoring – alarm start/stop
 - more messages for different events description
- **KaDe KZ-1000-U – new integrated controller:**
 - IP and RS485 ports on board
 - new firmware with new features as above

Thank you for considering KaDe for your access control needs

