



Applications

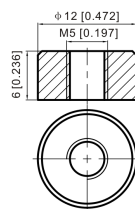
- Fire detection and fire systems
- Alarm, acces control and CCTV systems
- Uninterruptable Power Supply (UPS)
- Electric Power System (EPS)
- Emergency backup power supply
- Emergency light
- Railway signal
- Aircraft signal
- Alarm and security system
- Electronic apparatus and equipment
- Communication power supply
- DC power supply
- Auto control system

Specification

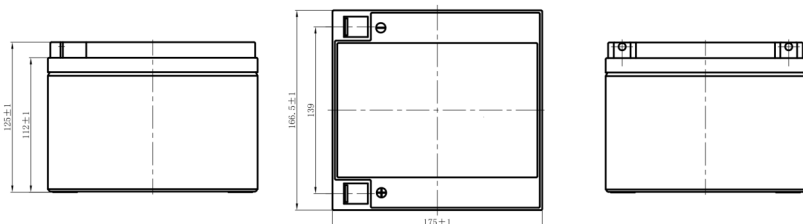
Nominal Voltage	12V
Nominal Capacity(20HR)	26.0AH
Dimensions	Length 166.5±1mm (6.56 inches) Width 175±1mm (6.93 inches) Container Height 125±1mm (4.92 inches) Total Height (with Terminal) 125±1mm (4.92 inches)
Approx Weight	8.0 Kg (17.64 lbs)
Terminal	B12
Container Material	ABS
Max. Discharge Current	390A (5s)
Internal Resistance	Approx 14mΩ
Operating Temp.Range	Discharge : -15~50°C (5~122°F) Charge : 0~40°C (32~104°F) Storage : -15~40°C (5~104°F)
Nominal Operating Temp. Range	25±3°C (77±5°F)
Cycle Use	Initial Charging Current less than 5.4A. Voltage 14.4V~15.0V at 25°C(77°F) Temp. Coefficient -30mV/°C
Standby Use	No limit on Initial Charging Current Voltage 13.5V~13.8V at 25°C(77°F) Temp. Coefficient -20mV/°C
Capacity affected by Temperature	40°C (104°F) 103% 25°C (77°F) 100% 0°C (32°F) 86%
Self Discharge	MXV series batteries may be stored for up to 6 months at 25°C (77°F) and then a freshening charge is required. For higher temperatures the time interval will be shorter.

Terminal

B12 Terminal



Dimensions



Constant Current Discharge (Amperes) at 25°C (77°F)

F.V/Time	5min	10min	15min	20min	30min	45min	1h	2h	3h	4h	5h	6h	8h	10h	20h
1.85V/cell	49.5	32.9	27.1	23.9	19.6	15.3	12.6	7.76	5.84	4.80	4.08	3.53	2.81	2.35	1.29
1.80V/cell	59.3	39.5	31.9	27.3	21.8	16.7	13.7	8.32	6.24	5.11	4.28	3.69	2.91	2.42	1.30
1.75V/cell	71.1	45.2	35.5	30.2	23.4	17.9	14.5	8.67	6.45	5.23	4.40	3.79	2.99	2.48	1.31
1.70V/cell	82.5	50.5	39.1	32.7	25.0	18.8	15.1	8.97	6.61	5.36	4.50	3.87	3.04	2.52	1.34
1.65V/cell	91.0	54.8	41.9	35.0	26.3	19.6	15.6	9.26	6.79	5.49	4.60	3.95	3.08	2.55	1.35
1.60V/cell	100.4	59.3	45.0	37.0	27.7	20.4	16.2	9.49	6.96	5.63	4.70	4.04	3.15	2.59	1.36

Constant Power Discharge (Watts/cell) at 25°C (77°F)

F.V/Time	5min	10min	15min	20min	30min	45min	1h	2h	3h	4h	5h	6h	8h	10h	20h
1.85V/cell	92.4	61.6	51.0	45.0	37.1	29.3	24.4	15.1	11.4	9.39	7.99	6.94	5.54	4.64	2.55
1.80V/cell	107.2	72.3	59.0	51.1	41.2	31.9	26.2	16.0	12.1	9.94	8.36	7.22	5.73	4.78	2.57
1.75V/cell	127.4	82.0	65.0	56.0	43.8	33.9	27.6	16.7	12.4	10.1	8.56	7.40	5.87	4.89	2.59
1.70V/cell	145.8	90.4	71.0	60.2	46.5	35.4	28.7	17.2	12.7	10.4	8.74	7.55	5.96	4.96	2.64
1.65V/cell	158.4	96.5	75.1	63.8	48.6	36.7	29.5	17.7	13.0	10.6	8.90	7.67	6.04	5.02	2.67
1.60V/cell	171.6	103.0	79.3	66.3	50.4	37.9	30.5	18.1	13.3	10.8	9.06	7.82	6.15	5.10	2.68