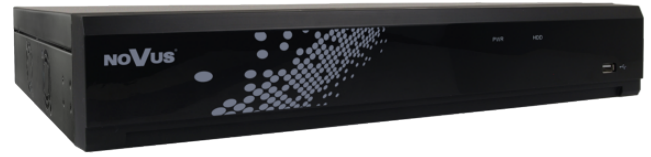
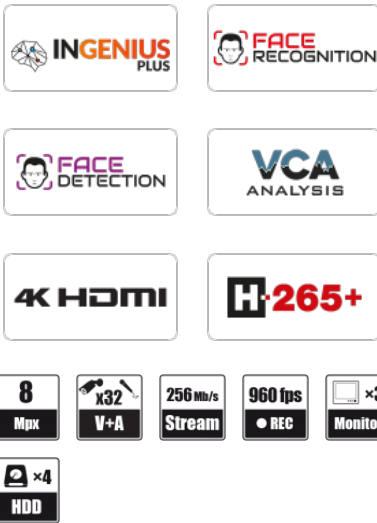


32-channel IP Recorder NVR-4532-H4/F-II

4000 VSS IP



KEY FEATURES



- 32 x video and audio channels
- Recording speed up to 960 fps at 3840 x 2160
- Recorded stream size: 256 Mb/s in total from all cameras
- 4 x internal place for HDD mounting
- 3 x monitor outputs (HDMI 4K UltraHD, HDMI, VGA)
- Face recognition

COMPLIANCE



DIMENSIONS

The recorder is dedicated to work with NOVUS 4000 series IP cameras. Detailed data can be found in the compatibility table available in the **DOWNLOADABLE FILES** tab.

VIDEO

IP Cameras	up to 32 channels at 3840 x 2160 resolution (video + audio)
Maximum Supported Camera Resolution	3840 x 2160 • 4000 x 3000 for fisheye cameras
Compression	H.264, H.264+, H.265, H.265+
Monitor Output	main (split screen, full screen, sequence): 1 x HDMI (4K UltraHD), 1 x VGA (up to 2 monitors simultaneously) • spot: 1 x HDMI (FullHD)
Dualstreaming Support	yes
Fisheye Support	using Internet Explorer, RXCamView, NHDR-5000Viewer, N Control 4000

AUDIO

Audio Input/Output	1 x line-in (RCA) / 1 x HDMI, 1 x line-out (RCA)
--------------------	--

RECORDING

Recording Speed	960 fps (32 x 30 fps for 3840 x 2160 and lower)
Stream Size	256 Mb/s in total from all cameras
Recording Mode	continuous, triggered by: manual, alarm input, motion detection, face recognition, intelligent image analysis functions, PIR alarm, downloading camera records after restoring network connection (ANR)
Prealarm/Postalarm	up to 3 s/up to 600 s

DISPLAY

Display Speed	960 fps (32 x 30 fps)
---------------	-----------------------

PLAYBACK

Playback Speed	480 fps (16 x 30 fps)
Recorded Data Search	by date/time, events, image analysis events, motion in a defined area, related to face recognition, tags

BACKUP

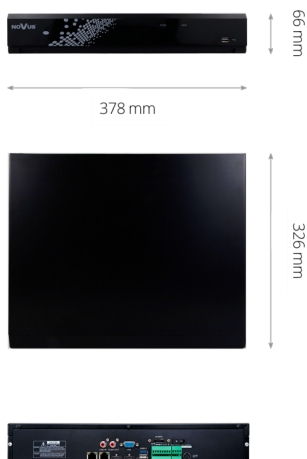
Backup Methods	USB port (HDD or Flash memory), network
Backup File Format	JPG, BMP, PNG, MP4, AVI, RF

STORAGE

Internal Storage	available mount: 4 x HDD 3.5" 8 TB SATA
Total Internal Capacity	32 TB
External storage	network HDD (NFS or SMB/CIFS)

32-channel IP Recorder

NVR-4532-H4/F-II



Total External Capacity 8 TB

ALARM

Internal Alarm Input/Output	16/1 relay type (max. 12VDC/1A)
Camera Alarm Input/Output	supports IP camera's alarm input/output
System Reaction to Alarm Events	buzzer, e-mail, alarm output activation, screen message, recording activation, PTZ, Full Screen, FTP picture upload, FTP video upload, picture to Cloud, video to Cloud, voice prompt

INTELLIGENT IMAGE ANALYSIS

Supported Functions	Exception, Tripwire, Zone entrance, Abandoned Object, Object Disappearance, Crowd detection, Face Detection, Face Recognition (in cooperation with selected 4000 series cameras), Pedestrian Detection, Cross Counting, Sound detection, Perimeter Intrusion Detection by pedestrian or vehicle, Line Cross Detection by pedestrian or vehicle, License Plate Recognition (LPR), Objects Distinguishing, Queue Length Detection, Heat Map, Cross Counting by pedestrian or vehicle
---------------------	--

NETWORK

Network Interface	2 x Ethernet - RJ-45 interface, 10/100/1000 Mbit/s
Network Protocols Support	HTTP, TCP/IP, IPv4/v6, HTTPS, FTP, DHCP, DNS, DDNS, NTP, RTSP, UPnP, SNMP, PPPoE, SMTP, P2P, HTML5
PC/MAC Software	NOVUS MANAGEMENT SYSTEM VSS, NOVUS MANAGEMENT SYSTEM AC, NMS, Internet Explorer, NHDR-5000 Viewer, Firefox, Chrome, Opera, Edge, N Control 4000/Safari, NHDR-5000 Viewer, N Control 4000
Mobile applications	RxCamView (iPhone, Android)
Number of Simultaneous Connections	up to 32 users, each user up to 5 devices
Bandwidth	112 Mb/s in total to all client workstations

PTZ

PTZ Functions	pan/tilt/zoom, preset commands, patterns
---------------	--

AUXILIARY INTERFACES

USB Ports	1 x USB 3.0, 2 x USB 2.0
-----------	--------------------------

OPERATING SYSTEM

Operating System	Linux
OSD	languages: Polish, English, others
Control	PC mouse and IR remote controller (in-set included), network
System Diagnostic	automatic control of: HDDs, network, camera connection loss
Security	password protection, IP filtering

INSTALLATION PARAMETERS

Dimensions (mm)	378 (W) x 66 (H) x 326 (D)
Weight	2.5 kg (without HDDs)
Power Supply	12 VDC (100 ~ 240 VAC/12 VDC PSU in-set included)
Power Consumption	60 W (with 4 HDDs)
Operating Temperature	-10°C ~ 45°C



32-channel IP Recorder NVR-4532-H4/F-II

*The availability of individual functions (including image analysis) depends on the model of the cameras used, as well as the software version of the recorder and cameras.
In order to create face recognition system, please deploy NOVUS 4000 series IP cameras with "F" in the model name.
Presented display and playback speeds are achieved using dual-streaming. Detailed data on hard drives can be found in the compatibility table available in the DOWNLOADABLE FILES tab.*

