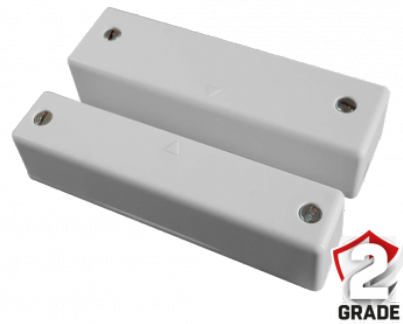




Magnetic contact with 2 NC outputs, Grade 2

AST-MKT4200/G2



Operation temperature	-20°C - 80°C
Reed switch parameters	0.5A/100VDC/10W/200mΩ
Output	2xNC
Applications	wooden and metal doors
EN Grade	Grade II
Tamper loop	yes
Connection	terminal connector
Switching distance (gap)	over 50mm depending on the mounting surface
Colour	white
Dimensions	contact: 24,5mm x 85mm x 19mm (LxWxh), magnes: 18,7mm x 84,5mm x 19mm (LxWxH)

