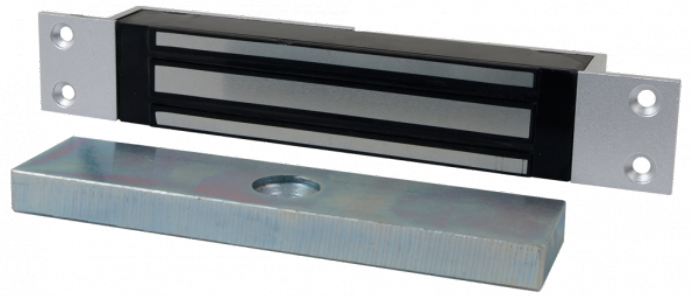


Electromagnetic lock

KDA-LOCK180ZW



power consumption	300mA for 12VAC / 150mA for 24VDC
Producer	KaDe
Supply power	12 or 24 V DC
dimensions	190 x 32 x 22
Holding force for electromagnetic / maximum pressure for electric bolt	180Kg
Additional functions	door lock sensor (Hall effect sensor), recessed