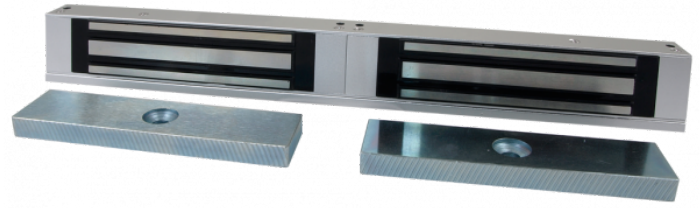


Dual electromagnetic lock

KDA-LOCK180P



power consumption	600mA for 12VAC / 300mA for 24VDC
Producer	KaDe
Supply power	12 or 24 V DC
dimensions	340 x 42 x 21
Holding force for electromagnetic / maximum pressure for electric bolt	180Kg
Assembly / execution options	coat
Additional functions	double