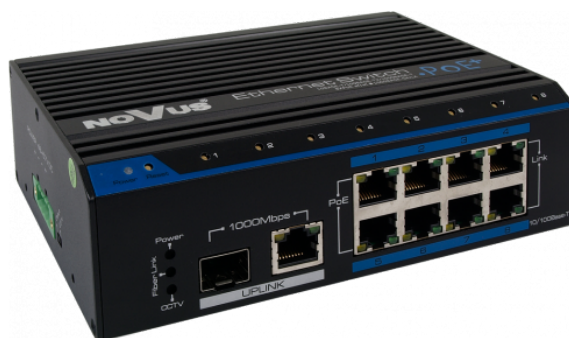


8-PORT POE+ SWITCH

NV-208S/P+



KEY FEATURES

- 8 x 100Mbps PoE+
- 1 x 1000Mb/s UPLINK, 1 x 1000Mb/s SFP UPLINK

GENERAL

Device Type PoE+ Switch

NETWORK

Ports	PoE+ Ports: 8 x 10/100Mbps (the number of ports simultaneously operating with PoE + mode is limited by PoE budget) • UPLINK ports: 1 x 10/100/1000Mbps • Optical UPLINK ports: 1 x SFP
Transmission Distance	1-8 ports in PoE mode: 150 m * • 1-8 ports in PoE+ mode: 20 m * • UPLINK port: 150 m * • Ports 1-8 in PoE mode: 240 m *, in CCTV mode
PoE standards	IEEE802.3af, Class 3, IEEE802.3at, Class 4
Supported protocols	IEEE 802.3 10BASE-T, IEEE 802.3u 100BASE-TX, IEEE 802.3ab 1000BASE-T, IEEE 802.3z 1000BASE-SX/LX
Packet buffer	1 MB
MAC address list	8K

FUNCTIONS

Buttons	8 reset buttons, one for each interface, 1 button to device reset
CCTV	CCTV mode button that increases transmission range and PoE to 240m
Surge protection	yes

INSTALLATION PARAMETERS

Case	Aluminium, black color
Dimensions (mm)	159 (W) x 46.5 (H) x 110 (L)
Weight	570 kg
Input Voltage	48 VDC - 57 VDC (power supply 100 ~ 240 VAC/48 VDC Included)
Power Consumption	5 W
PoE Budget	120 W for ports 1 to 8, up to 30 W for one port • 240 W for ports 1 to 8, up to 30 W for one port, using optional power adapter NV-PS120W
Operating Temperature	-40°C ~ 75°C

* The values was achieved in a test environment. In different environment this value can change due to interferences or influence of other devices.